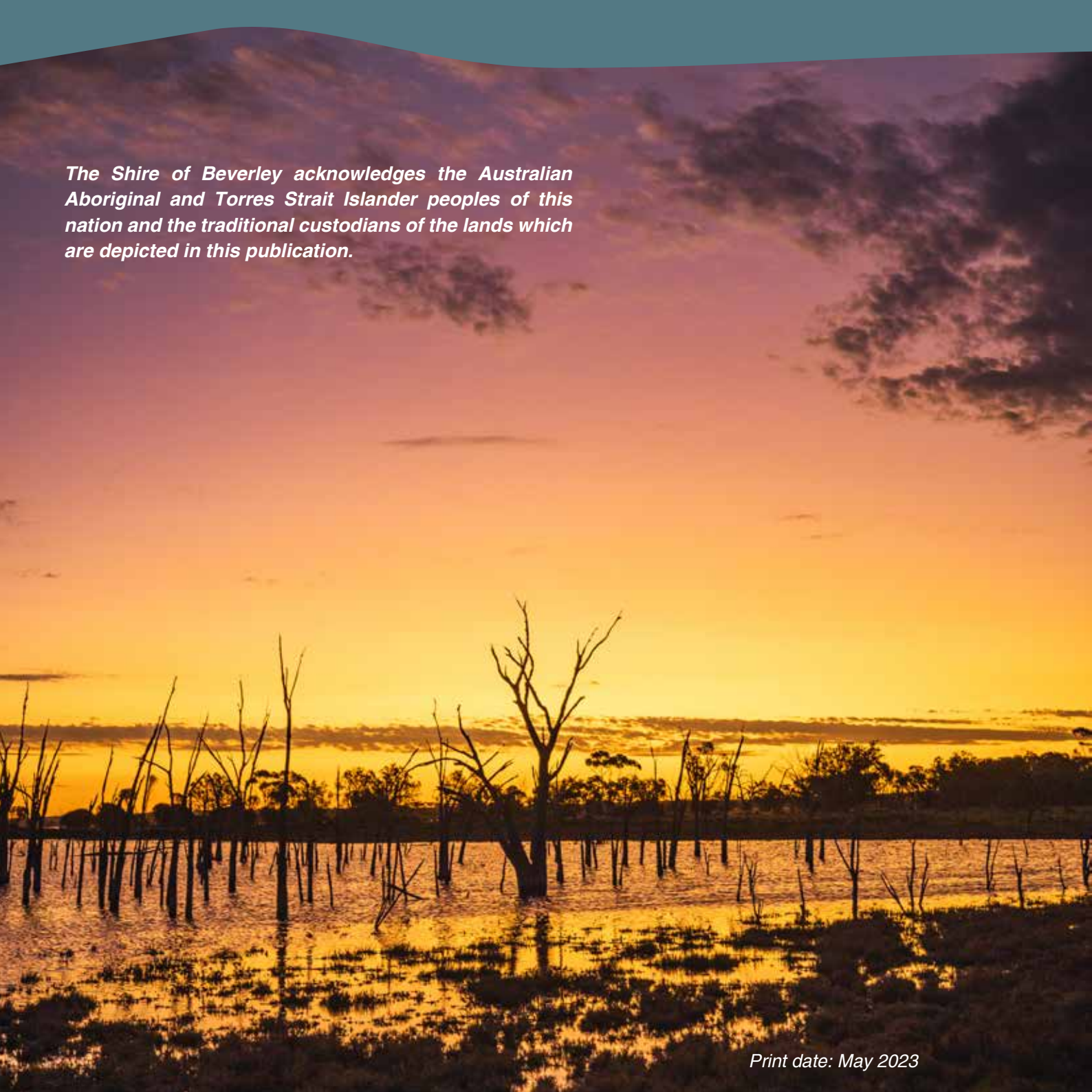


**Be** **verley** Western Australia  
**Be very you**







*The Shire of Beverley acknowledges the Australian Aboriginal and Torres Strait Islander peoples of this nation and the traditional custodians of the lands which are depicted in this publication.*

## Welcome to Beverley

The Beverley community welcomes you to take your time and discover all the wonderful things Beverley and it's surrounds has to offer. Whether you enjoy life at a slower pace, or you like to live on the edge, Beverley will have something for you to enjoy. Just a short drive over the hills from Perth you can visit for the day or stay for a night or two and soak up the chilled atmosphere! Read further to check out the great accommodation options available, and did you know we are an RV Friendly town? If you are a nature lover, we have some great walk trails to discover, or take a hike up County Peak for panoramic views of the surrounding region. Spring is a popular time to visit when the wildflowers are in full bloom. Experience the feeling of soaring in a glider and get a birds eye view of the landscape below. Or if you want take a step back in time, visit the Dead Finish Museum to see what life was like for our Beverley pioneers or follow the award winning Vincent Street Heritage Walk.

For the cultural-buff Beverley has plenty to see and do! The Beverley Station Platform Theatre holds regular plays and concerts - check out [www.beverleystationarts.com](http://www.beverleystationarts.com) for upcoming events. Wander down Vincent Street and discover murals by well-known artist James Giddy. Can you spot all of his amazing murals? Or visit the artist-in-residence at the Station Gallery. If it is shopping you are after, you will find a handful of quaint little shops and galleries to find that special something. If all this walking is making you hungry, check out the places to fill your belly. For all this and more, keep reading or visit our friendly staff in the Beverley Visitor Centre.

**Photography & Illustrations**

Photo credits include Hollie Smith Photography, Chad Gerber and Greg Davis among other aspiring photographers. Beautiful Illustrations created by local artist, Marlene Willson.

**Disclaimer**

*Every effort has been made to ensure information is correct at the time of printing.*

# CONTENTS

ABOUT	4
History Agriculture Visitor Centre	
SEE	7
Museums Street Murals Galleries Local Churches Natural Attractions Stargazing Wildflowers	
EAT	16
MAPS	18
STAY	22
DO	24
Moort Wabiny Park Annual Events Gliding Clubs & Groups Shopping Trails	
AROUND THE REGION	30
SERVICE LISTING	34



## History of Beverley

The heritage wheatbelt town of Beverley is 130 kilometres east of Perth on the Avon River. For thousands of years the Ballardong people lived along the Colguler (Avon River), their stories handed down through songs, dance and rock-art. They knew their land intimately and farmed it for food; they were native animal pastoralists and bush food harvesters. Early explorers remarked on the grassy park-like appearance of the land in the river valley - a result of regular controlled burning. The area is known as Wergijan to the Ballardong people. Officially founded in 1838, Beverley is one of Western Australia's oldest settlements. It was one of the first areas in Western Australia opened for agriculture after a glowing report to Governor Stirling by Ensign Dale. Dale made three excursions to the York/Beverley area, the first in 1829 and the last in 1830 when he was accompanied by Governor Stirling. Large tracts of land were taken up following the Governor's excursion and the first in the Beverley district

was taken up by the Colonial Surgeon, Dr Charles Simmons. Dr Simmons was granted 2,850 hectares on the Eastern bank of the Avon River in January 1831. It is a common belief that Beverley was named after Beverley in Yorkshire which was Dr Simmon's home. Official survey of the Beverley district took place in 1843. The Beverley townsite was established around 1868 and its status was enhanced with the extension of the electric telegraph from York in 1877. Other communities arose as more and more land was taken up. Localities such as The Dale, Mt Kokeby, East Beverley, Morbinning and Bally Bally had their own schools and district halls. Only the halls at Morbinning, Bally Bally and The Dale remain. The Beverley Road District was one of the nineteen local authorities established in 1871 by the colonial government. The original Beverley Road District was in excess of 150,000 square kilometres and extended all the way to the Western Australia border.

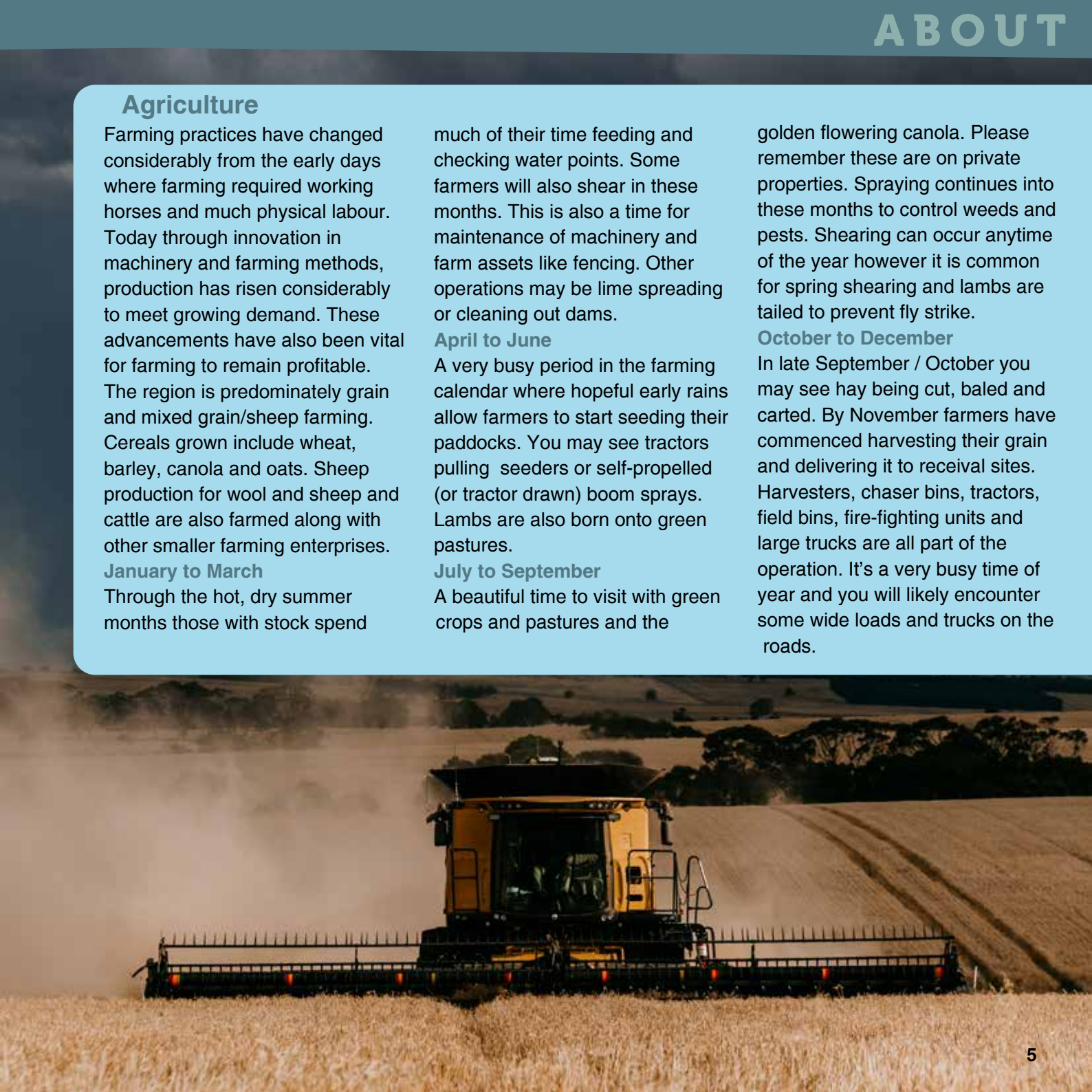
In 1892, the Beverley townsite became a separate municipality and in 1895 East Beverley Road Board was also instituted. These entities were short lived, with both absorbed back into the Beverley Road Board by 1913. The change of name to the Shire of Beverley occurred in 1961. In 1886, the Southern rail link from Perth was extended to Beverley, which was the terminus for three years until the connection to Albany was established. A pipeline to connect Beverley with the Goldfields water supply scheme was completed in 1908 and the first powerhouse to generate electricity for the town was established under private ownership in 1913. The flight of a locally-built aeroplane, "The Silver Centenary", in 1930 began Beverley's long association with flying. The Beverley airfield was upgraded in the 1940s to support the war effort. Beverley is a quiet agricultural town with a proud history - for visitors it is a chance to experience life in a heritage country town.

## Agriculture

Farming practices have changed considerably from the early days where farming required working horses and much physical labour. Today through innovation in machinery and farming methods, production has risen considerably to meet growing demand. These advancements have also been vital for farming to remain profitable. The region is predominately grain and mixed grain/sheep farming. Cereals grown include wheat, barley, canola and oats. Sheep production for wool and sheep and cattle are also farmed along with other smaller farming enterprises. **January to March** Through the hot, dry summer months those with stock spend

much of their time feeding and checking water points. Some farmers will also shear in these months. This is also a time for maintenance of machinery and farm assets like fencing. Other operations may be lime spreading or cleaning out dams. **April to June** A very busy period in the farming calendar where hopeful early rains allow farmers to start seeding their paddocks. You may see tractors pulling seeders or self-propelled (or tractor drawn) boom sprays. Lambs are also born onto green pastures. **July to September** A beautiful time to visit with green crops and pastures and the

golden flowering canola. Please remember these are on private properties. Spraying continues into these months to control weeds and pests. Shearing can occur anytime of the year however it is common for spring shearing and lambs are tailed to prevent fly strike. **October to December** In late September / October you may see hay being cut, baled and carted. By November farmers have commenced harvesting their grain and delivering it to receival sites. Harvesters, chaser bins, tractors, field bins, fire-fighting units and large trucks are all part of the operation. It's a very busy time of year and you will likely encounter some wide loads and trucks on the roads.





## Beverley Visitor Centre

The Beverley Visitor Centre is located in the Cornerstone building. The Visitor Centre stocks an array of Beverley mementos, gifts, fresh coffee beans, and many locally made products.

There is also a wonderful interactive display complete with a 1:5 scale

model, exact replica of the Silver Centenary plane built in Beverley. The friendly team at the Visitor Centre are available to help you with any information you need about Beverley and surrounding districts.

The Beverley Community Resource

Centre and library are also housed in the same building which provides a range of other services too.

### More information

Open Monday to Friday, 9 am to 4 pm. Saturday 10 am to 3 pm.

141 Vincent St, Beverley  
9646 1600 or 9646 1555.



## The Dead Finish Museum

The Dead Finish Museum is housed in the oldest building in Beverley. The building was originally called the Wheatsheaf Inn and was built by Alfred Smith in 1872.

It now houses a very fine collection of artifacts depicting life in Beverley since settlement in 1831.

Of particular significance are the many hand-made tools, gifts, clothes and pieces of furniture, highlighting the make-do attitude and creative skill of early settlers. The Museum is open every Sunday from 11am to 3pm from mid-March to November. Admission \$2 adult and children with adult free. Alternatively, the Museum can be opened by appointment:

Glenys 0417 973 559

Joy 0427 411 881

Delys 9646 1075

E:bhsdeadfinish@gmail.com

For more historical displays, swing by either the **Avondale Machinery Museum** or **Fergusons Vintage Collection**. Contact the visitor centre for directions and opening times.





## Street Murals

Beverley was lucky to play host to well known artist James Giddy who visited the town in June 2017. Mr Giddy painted six animals on blank walls throughout the town centre, in a medium known as *en plein air* - which translates as painting in the open air. Take a walk along Vincent St and you will be able to spot them all.



## Beverley Station Gallery and Platform Theatre

Beverley Station Gallery and Platform Theatre is a multi-purpose cultural precinct in the centre of the Beverley townsite.

Originally the Railway Station was a hub of activity when Beverley was an important stop on the Perth to Albany passenger line.

It was built in 1886 in Victorian Tudor style.

Closed in October 1984, the Railway Station fell into disrepair, but after much hard work by both the community and council it was beautifully restored in 2006.

In 2007, the Beverley Railway Station was the winner of the Heritage Council of Western Australia award for Conservation of a Place on the State Register of Heritage Places.

The Station now displays the Shire of Beverley Art Collection and you can also buy artwork or talk with an artist in residence.

Venture beyond the gallery to the Platform Theatre and see the amazing amphitheatre and stage, where many events are held.

### More information:

Open Thursday to Sunday, 11am - 3pm. Closed in January.

120 Vincent St, Beverley, WA

Web: [www.beverleystationarts.com](http://www.beverleystationarts.com)

Facebook: @6304stationarts





## Local Churches

The Christian faith was a cornerstone in the lives of Beverley pioneers, and following the church services, social gatherings or picnics were often held and were an important part of early society. Several English traditions including 'The Blessing of The Plough' are still conducted at the St John's in the Wilderness each year before ploughing season. The first Catholic Church was built in Queen Street in 1890 and a small Methodist Church was erected in Hunt Road in 1893.

### St Peter's

The settlement of Gilgering, located between York and Beverley, was the first to have a permanent church erected in the area. St Peter's was an Anglican church built in 1858 by local families. St Peter's was built of brick, with sheoak shingle roof, and was consecrated in 1860.

While Gilgering was originally considered North Beverley, it is now in York Shire.

#### Directions

Drive towards York on the York-Beverley Road for 17.8 kms. The road to St Peter's Church is on the right just after Oakover Road, and is not easily noticed.



### St Paul's, Edwards Crossing

The settlers at Edwards Crossing had to wait until St Peter's at Gilgering was built before they were able to start their own building. St Paul's was built of local stone quarried from around the nearby river. The roof was originally made of timber shingles and the floor paved with hand made mud bricks.

Consecrated in 1862 and part of the original site selected by the first settlers of the district to set up the Beverley town site.

#### Directions

Drive 5 kms towards York. Turn right onto Top Beverley Rd. Just over the bridge St Pauls can be seen on the right hand side.

### St Mary's Anglican Church, John Street

St Mary's was the first Anglican Church erected at the new Beverley town site, with Canon Grosser the first minister. The church was consecrated in 1892. In 1914 a bell tower was added to the church but in the early 1920s it was realised that the weight of the

tower was threatening the security of the church foundations, and the tower was removed in 1926. A feature of this church is the beautiful stained glass windows. The Anglican cemetery is located some distance from the church, at the northern end of Forrest Street.



### St Andrew's, Greenhills

St Andrew's is an Anglican church, built in 1912 by the local Penny family.

The original church, which fell into disrepair and eventual ruin, existed

where the cemetery is currently located and was consecrated by Bishop Riley, on 20th May 1895. It is a one-story, timber weatherboard structure

demonstrating the Federation Carpenter Gothic style.

#### Directions

Located on the York Quairading Rd and Greenhills Rd crossroads.



### St John in the Wilderness

This picturesque church was built to meet the needs of the settlers in the expanding Dale area, who had previously attended St Peter's, of Gilgering.

The building was constructed from local stone and was consecrated on the 22nd May 1895 by Rt. Rev Riley, 3rd Bishop and later

Archbishop of Perth.

#### Directions

From Beverley proceed south along the Great Southern Hwy for 2.8 kms and turn right at the sign—Perth via Westdale. The church and hall are located a further 28 kms onward, clearly visible on the left hand side of the road.

### Methodist Church, Hunt Road

This church was built in Federation Gothic style in 1907 and was erected on the site of the original Methodist Church.

The original Methodist Church was built in 1893.

It later became known as the Uniting Church and is now home to the Beverley Real Life Church.

The Beverley Methodist cemetery is situated over the river, on the eastern end of Vincent Street.



### Sacred Heart Catholic Church, Lukin Street

Catholic families were able to worship in their own denominational church from 1900, when a Catholic church was built on Queen Street. This church was in use until 1933, when the Sacred Heart Church was erected in Lukin St.

Sacred Heart was built in the inter-war Gothic style with stained glass

windows. The original Catholic Church building still stands in Queen Street and is now a private residence.





## Natural Attractions

### Avon River

The Avon River flows right through town and there is a picnic area on the east side of the bridge.

The Avon River is 240 km from source to mouth, where it becomes the Swan River.

It can also be seen from the top of County Peak.

There are bridges across the river at Edward's Crossing and Mt Kokeby, as well as in town.

### Flora and fauna

Beverley's climate is regarded as Mediterranean, with cool, moist winters and hot, dry summers. Common tree species in the area are York Gum, Salmon Gum and Jam Acacia.

There is also plenty of beautiful wildlife to be seen on your travels. You won't have to look too hard to spot the pink and grey gallahs that are very common in the area. Keep your eyes peeled for blue wrens, willy wagtails, and white faced herons. And if you are really lucky you might spot an echidna or two.

### Birds

For the bird lovers, the Avon Valley is a biodiversity hotspot for birdlife. They are particularly attracted to the waterways which makes the Dale River Reserve a popular location for bird watching and catching that perfect photo.

### Yenyening Lakes

Yenyening Lakes are an important part of the Wheatbelt environment from an environmental, economic, and social view point.

The lake system is made up of a chain of lakes from the Qualandary Crossing through to the Corrigin-Quairading Rd.

The Lakes are a very significant feature in the context of wheatbelt hydrology, located at the junction where the sluggish saline valleys meet the channelised Avon River. All the water from the Lockhart and

Yilgarn Catchments flows through the Yenyening Lakes and into the Avon River from an area of 91000 square kilometres.

The lakes are not always full as generous rainfall is needed to fill them each year.

However, the diverse ecosystem provides habitats for an array of native flora and fauna, including breeding black swans, mountain ducks, minos, echidnas and kangaroos.

### County Peak (Mt Quajabin)

County Peak was given its name when the first surveyors drew up the original counties for the Swan River colony around 1830. County Peak was the intersection of counties York, Howick, Grantham and Minto.

The name Quajabin is derived from the Aboriginal word Quabin, which means 'good camp'.

Following European settlement the area surrounding County Peak was taken up in 1898 by the pioneering McLean brothers John, Thomas, Kenneth and Donald Jr.

In 1910 the McLean family provided land at County Peak for a school to be built which taught many children in the district between 1910 and 1933.

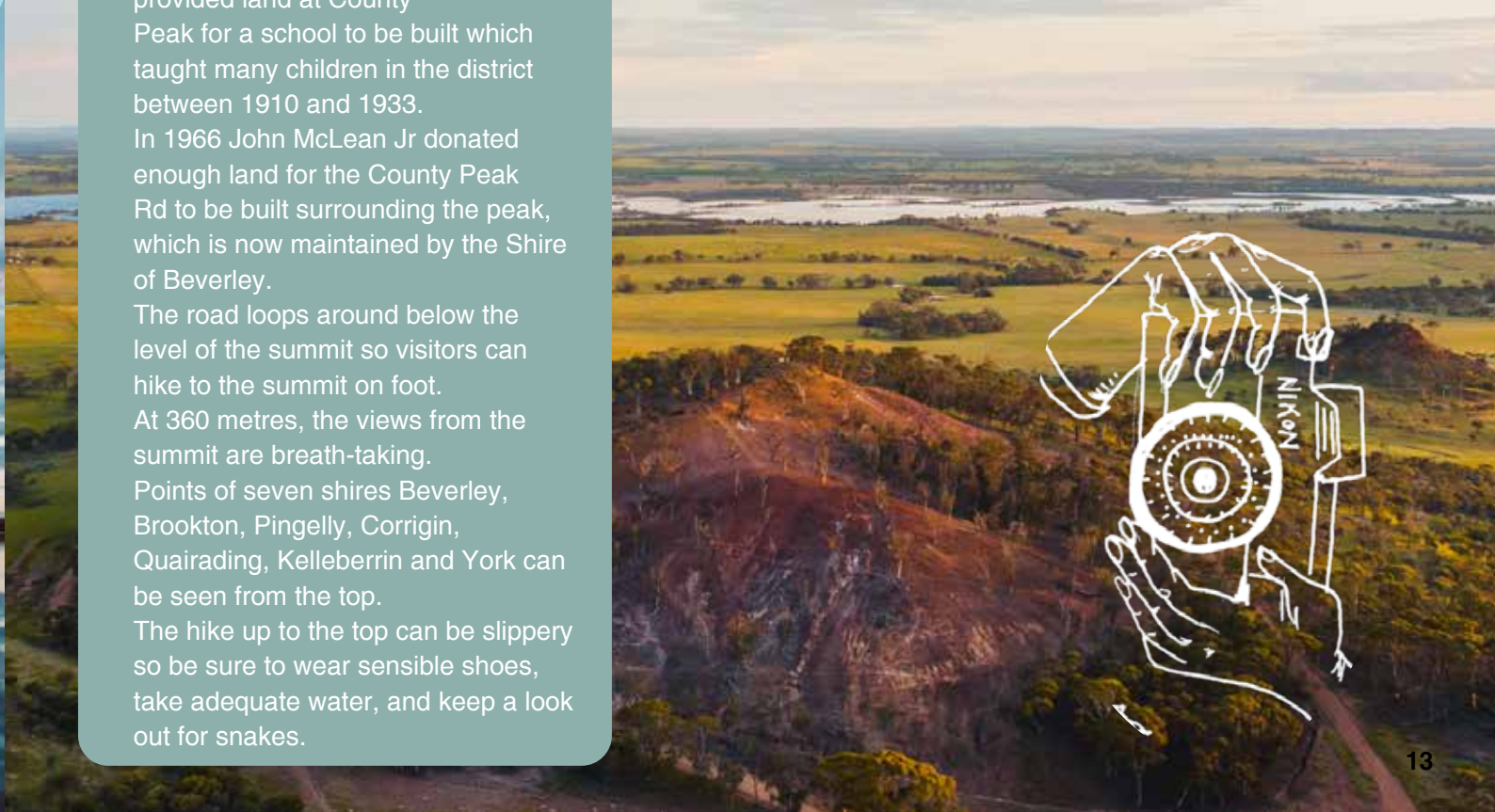
In 1966 John McLean Jr donated enough land for the County Peak Rd to be built surrounding the peak, which is now maintained by the Shire of Beverley.

The road loops around below the level of the summit so visitors can hike to the summit on foot.

At 360 metres, the views from the summit are breath-taking.

Points of seven shires Beverley, Brookton, Pingelly, Corrigin, Quairading, Kelleberrin and York can be seen from the top.

The hike up to the top can be slippery so be sure to wear sensible shoes, take adequate water, and keep a look out for snakes.





## Stargazing

Whether you have a telescope, camera lens or nothing at all, you are sure to be amazed. Check the weather forecast and download an app like Google sky map or Stellarium before you go! Ballardong aboriginal astronomy planispheres are available at the Beverley visitor centre for purchase which help you locate the constellation of the Seven Djookian (Sisters). Our top spots for Stargazing..

### Yenyening Lakes

The lakes are a hotspot for photographers wanting to get spectacular astrophotography shots with no light pollution. The backdrop of the lakes and the surrounding farmland make for a tranquil setting. Allow 35 minutes' drive from Beverley townsite.

### Beverley Airfield

Head to the outskirts of town off Lukin street to the airfield where you will find some great open space to set up a telescope or tripod for some fabulous astrophotography.

### Avondale Farm

Managed by the National Trust and although it is a working farm the historic buildings and reserve can be accessed by appointment (08) 9321 6088.



## Wildflowers

You will find a variety of wildflowers throughout the year. The most popular places to see wildflowers are the Brooking Street Reserve, Poison Hill Reserve and Dale River Reserve.



When visiting these areas please take care of the surrounding flora and fauna, and remember the picking of wildflowers is prohibited by law throughout Western Australia.

The best time to look for wildflowers in Beverley is late winter to early spring, or from August to October.

Stop in at the Beverley Visitor Centre to find out more about the wildflowers you will be able to spot during your visit.

### Directions

See the map on page 18 for the location of Brooking St Reserve and page 20 for the location of Poison Hill Reserve and Dale River Reserve.





## Where to Eat

Beverley has so much to offer the hungry traveller in the way of sustenance and refreshments. There is nothing like the smell of freshly baked bread and delicious treats in the Beverley Bakehouse. If you are after something more substantial try out the Red Vault Cafe with delicious meals on offer. Feeling like you need a special beverage with your meal?

Head to the Hotel Beverley, or Freemasons Tavern. The Greenhills Inn Bar and Cafe and White Gum Farm Lake Kimberley Bar & Grill are both a short drive north of Beverley and are great country pubs that serve lunch, dinner, coffee and drinks. In the summer months the Beverley Aquatic Centre has a great kiosk for you to refuel after a swim.



**GREENHILLS INN**

**Free Camping on-site**  
444 Greenhills Rd  
Greenhills, 6302  
Ph: 9641 4095  
greenhillsinn.com.au

**Opening hours:**  
Tues 5.00pm - 8.30pm  
Wed - Sat 12.00pm - Late  
Sun 11.00am - 9.00pm  
Lunch 12.00pm - 2.00pm  
Dinner 6.00pm - 8.00pm

**BEVERLEY BAKEHOUSE**

Bread • Rolls • Coffee  
Hot food • Sushi • Cakes  
Birthday cakes made to order

Open Mon - Fri 7 am - 4 pm,  
Sat 7 am - 2 pm and  
Public Holidays 7 am - 2 pm

123 Vincent St, Beverley Ph: 9646 1839

**The Red Vault Restaurant**

Dine in and takeaway

...All Freshly Made  
...Amazing Burgers  
...Coffee and Cakes  
...Fish & Chips

Open Late for Dinner or Call  
and place a takeaway order  
115 Vincent Street Beverley  
Phone 9646 0008

# Freemasons Tavern Beverley

## The New Pub inside an Old Pub

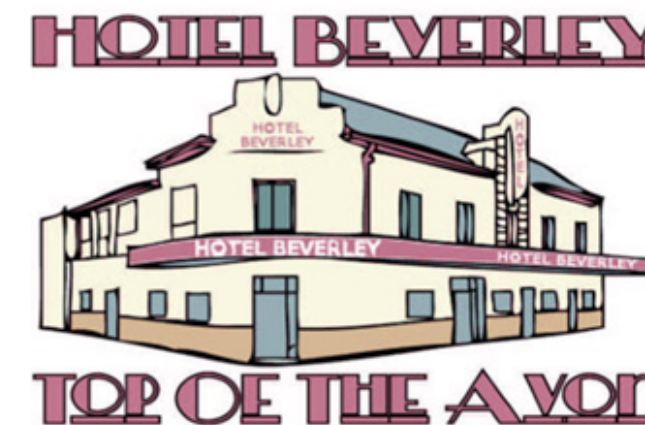
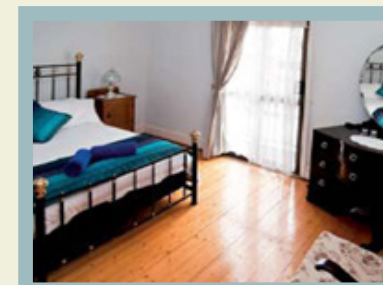
### Cold Beverages, Meals, Accommodation



**Accommodation Bookings : 0407 095 178**  
**Restaurant Bookings : 08 9646 1347**

**104 Vincent Street Beverley**  
Email: [freemasonstavernbeverley@outlook.com](mailto:freemasonstavernbeverley@outlook.com)

Great selection of beers on tap  
Extensive wine list  
Accommodation  
Bottleshop - with specials  
Open 7 days a week  
Lunch and dinner every day



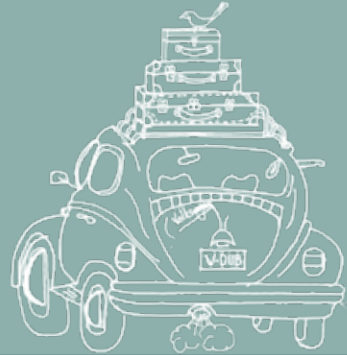
Shannon Dean  
137 Vincent St  
Ph: 9646 1190  
Mob: 0406 362 772  
E: [beverleypub@gmail.com](mailto:beverleypub@gmail.com)  
[www.hotelbeverley.com.au](http://www.hotelbeverley.com.au)



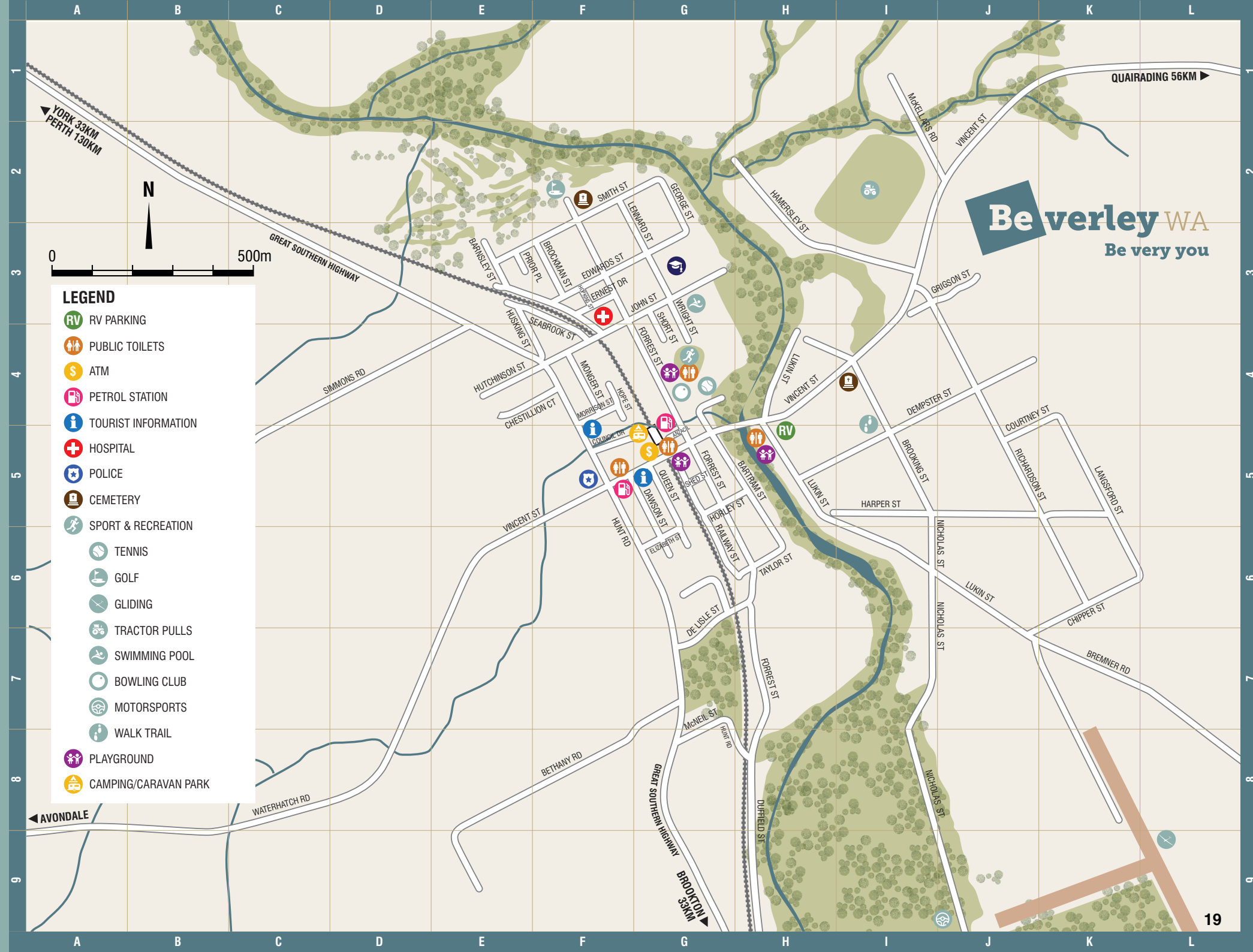




# PLAN YOUR ROAD TRIP



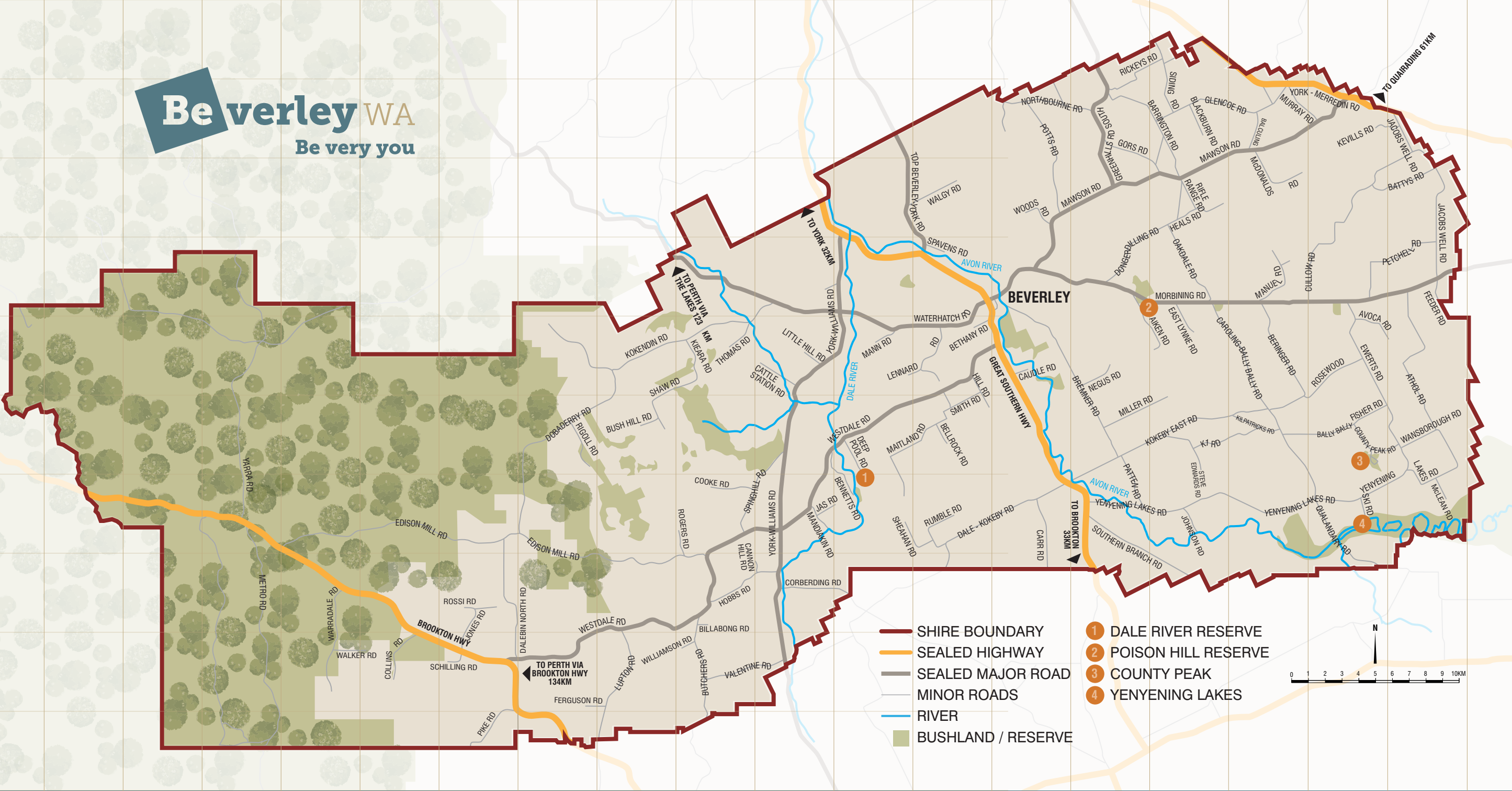
ESTIMATED TRAVEL TIME (MIN) DRIVING DISTANCE (KM)	BEVERLEY	BROOKTON	YORK	QUAIRADING	NORTHAM	TOODYAY	MIDLAND	GOOMALLING	ARMADALE	PERTH	HYDEN
BEVERLEY	-	24	25	38	47	66	76	75	79	105	142
BROOKTON	33	-	46	54	69	88	94	96	77	106	124
YORK	33	66	-	45	27	44	60	54	83	88	154
QUAIRADING	53	76	69	-	96	83	103	82	116	128	112
NORTHAM	65	98	36	96	-	21	59	34	91	84	169
TOODYAY	91	124	56	122	27	-	56	33	87	81	189
MIDLAND	104	131	79	146	78	68	-	128	43	35	212
GOOMALLING	109	142	80	114	46	49	115	-	117	153	188
ARMADALE	115	115	107	167	108	98	36	145	-	50	199
PERTH	123	134	96	164	97	86	18	134	30	-	233
HYDEN	227	198	242	174	269	295	319	288	312	328	-





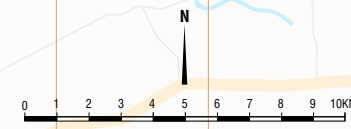
# Be verley WA

Be very you



- SHIRE BOUNDARY
- SEALED HIGHWAY
- SEALED MAJOR ROAD
- MINOR ROADS
- RIVER
- BUSHLAND / RESERVE

- 1 DALE RIVER RESERVE
- 2 POISON HILL RESERVE
- 3 COUNTY PEAK
- 4 YENYENING LAKES





## Where to Stay

There is nothing like a night or two away in the country. Spend some time really soaking up the sights of Beverley and stay a while.

There are plenty of options, including the Beverley Caravan Park, and the free RV Friendly 48 hour stop over right near the river, or further out of town towards York,

Whitegum Farm is a great place to pull up your caravan. Rest your head at one of the BnB, farmstay or Air BnB's. Or call in and book a room at either of the pubs.

### RV Friendly

Beverley is an RV friendly town and there is a free RV friendly 48 hour

stopover area at Apex Park on Lukin St, across the road from the Avon River.



## BEVERLEY CARAVAN PARK & CABINS

Located in the centre of town, just a minute's walk to the main street for dining and shopping.

- 19 powered sites
- Area under the eucalyptus for campers
- Campers' kitchen facility
- RV dump site
- Six newly built one and two bedroom short stay units

Council Road, access from Hunt Rd (Great Southern Hwy).

Bookings available on website.

[www.beverleycaravanpark.com](http://www.beverleycaravanpark.com)



- Restaurant / Bar
- Caravan Park / Camping
- Swimming
- 4WD Park

[whitegumfarm.com.au](http://whitegumfarm.com.au)  
[info@whitegumfarm.com.au](mailto:info@whitegumfarm.com.au)  
 680 Cameron Road, York WA



## Beverley Bed & Breakfast

Barry & Joan Ross

131 Forrest Street, Beverley WA 6304

Ph. (08) 9646 0073

[reception@beverleybb.com](mailto:reception@beverleybb.com)

[www.beverleybb.com](http://www.beverleybb.com)

Single - Twin - Double - Family Rooms

Ensuites in all rooms, TV, A/C, Free NBN Wireless Internet  
 Tea & Coffee facilities, BBQ, Short or Long Stay, close to Town

Seniors Card Discount

3½ star Tourism Australia rated

Old World Charm — Modern facilities

## Lavendale Country Retreat

~Set along the Avon River between Beverley and York. An ideal option for corporate retreats, church groups, family reunions and crafting get togethers!~

1,2 & 3 bedroom self-contained cottages.

2 large meeting rooms & catering options

Playground & riverbanks to explore

Call us direct for group bookings or visit our website to book online

0422 168 848

[www.facebook.com/Lavendale](https://www.facebook.com/Lavendale)

[www.lavendalefarm.com](http://www.lavendalefarm.com)







### Moort Wabiny Park

Moort Wabiny park was constructed in 2020 in the main street conveniently located next to all amenities and shops. Moort Wabiny translated from Noongar means “Family Play”. The youth precinct includes a nature play area complete with a fantastic water play zone, tree top walk, balance and stepping logs, sand, rocks and a fabulous red

austin truck restored by the local Men’s Shed. If you are up for a challenge, check out the awesome pump track. Great for beginners, but challenging enough for those with a little more experience. How many laps can you do without pedaling? The star of the zone is the skate bowl along with street elements which sets the scene for some epic

moves. Skate, scooter or ride, the skate park is for all abilities. There is a half basketball court to shoot some hoops or challenge your mates to a little one-on-one. Set the family up for the day or meet your friends for a barbeque using the barbeque facilities. Toilets are located directly opposite in memorial park.



## ANNUAL EVENTS

### JANUARY

**Australia Day at the Pool Party**

### APRIL

**Anzac Day**

**Easter Tennis Tournament**

**Easter Art Exhibition**

**Easter Markets at the Station**

### AUGUST

**Beverley Agricultural Show**

### SEPTEMBER

**Wildflowers & Canola Crops in Spring**

### OCTOBER

**Cycle Events**

**Rose Show**

### DECEMBER

**Christmas Party at the Station**

## REGULAR EVENTS

**Community Markets:**

**First Saturday of each month  
(except Jan & Feb)**

**Platform Theatre Events**

**[www.beverleystationarts.com](http://www.beverleystationarts.com)**



Gliding

Enjoy the thrill of a motorless and silent flight over the central Wheatbelt, or become a member of the Beverley Soaring Society and learn how to fly a sail plane. There really is no better way to see the sights. The Society offers flights most weeks of the year, Friday to Sunday. Flights can be booked online.

More information:

E: bevsoar@beverley-soaring.org.au  
P: 0407 385 361  
www.beverley-soaring.org.au



Facilities & Clubs

There is plenty to do in Beverley to keep the whole family entertained for the day or weekend. There is a variety of sporting facilities and local clubs, here are a few:

Community Markets:	Vincent St	First Saturday of the month, 9am-12noon (except Jan/Feb)
Community Garden:	Forrest St	All welcome Ph: 0400 569 971
Tennis Club:	Forrest St	October to April, visitors welcome at Sunday social tennis.
Aquatic Centre:	John St	November to April (except Tues) 50m and toddler pools.
Golf Club:	Forrest St	Visitors welcome, at the scenic course on the banks of the Avon
Bowling Club:	Forrest St	Visitors welcome at the all-weather greens. Ph 9646 0330
Football, Netball & Hockey:	Forrest St	Winter sports are played at the recreation ground.
Horse and Pony Club:	Forrest St	Visitors welcome Ph 0419 879 310
Off Road Motor Sports:	Nicholas St	Motorkhanas, driver development days Ph: 0409 205 551
Rifle Club:	Nicholas St	Summer months. Ph: 9641 6061
Motorcycle Club:	Nicholas St	One of the top motocross layouts in WA. Ph: 0419 993 232
Tractor Pulling & Lawnmower racing:	Hammersley St	Winter - April to September tractorpullwa@gmail.com

For other community groups not listed, get a copy of the local **Beverley Blarney** or download from the Shire website to find out what is happening!







### Shopping in Beverley

There are some great, fun and quirky little shops in Beverley. Wander down Vincent St and check them out.

The East End Gallery has a fantastic display of regional art and sculptures for sale. The Beverley Pharmacy has an impressive range of giftwares as well as all your pharmaceutical needs!

The local IGA, Beverley Supermarket and Liquor has all your essentials combined with great service. Don't forget to drop into the Beverley Visitor Centre and have a look at some local produce and crafts. All this and so much more on Vincent Street!



116 Vincent Street | [www.eastendgallery.com.au](http://www.eastendgallery.com.au) | "Like" us on Facebook



**EASTEND GALLERY**  
SUPPORTING WHEATBELT ARTISTS

Open: Thursday – Sunday  
Public Holidays | 11am - 5pm  
Other times by appointment  
Ph: 0414 255 781 (Kate) or  
0400 373 822 (Michael)



Artists' group each Thursday  
For all artists | BYO materials | Family friendly.

**Beverley Visitor Centre**



**141 Vincent Street**  
**Ph: 9646 1555**

Monday - Friday 9.00am - 4.30pm  
Saturday - 10.00am - 3.00pm (Feb-Nov)

**[www.beverleywa.com](http://www.beverleywa.com)**

### BEVERLEY EARTHMOVING

LOCAL BUSINESS, SERVICING BEVERLEY FOR OVER 15 YEARS



**GRADER - BACKHOE - BOBCAT  
TIP TRUCK**

ROAD BUILDING AND MAINTENANCE  
HOUSE PADS - SEPTIC SYSTEMS  
SAND, GRAVEL, BLUE METAL  
FIRE BREAKS - CONTOUR BANKS - ROADED CATCHMENTS  
CALL - DAN WILKINSON  
0417 093 090  
EMAIL - DAN.ZOE@PM.ME  
[WWW.FACEBOOK.COM/BEVERLEYEARTHMOVING/](http://WWW.FACEBOOK.COM/BEVERLEYEARTHMOVING/)

### BEVERLEY PHARMACY



Get all your healthcare and medical needs including prescriptions, vitamins and first aid. Why not treat yourself, or get a lovely gift from the beautiful range of cosmetics and giftware

112 Vincent St, Beverley WA, 6304

Phone: 08 9646 1134

[beverleypharmacy@gmail.com](mailto:beverleypharmacy@gmail.com)

#### Opening hours

Mon to Fri 9am - 5pm  
Sat 9 - 12 noon



### Beverley Supermarket & Liquor

122 Vincent Street, Beverley

Open 8.30-5.30 Monday to Friday

8.30 to 12.00 Saturday



## Trails

The Shire of Beverley has a large variety of flora, fauna and landscapes. This provides a fantastic opportunity for trail experiences.

Due to the hot temperatures and high fire risks through the summer period, not all trails are accessible all-year-round.

The *Brooking Street Bushland Walk Trail* is a perfect stroll in springtime where you will be rewarded with many beautiful orchids. Likewise, the *Dale River Reserve* is a nature haven and also hotspot for bird watchers too. The



*County Peak Pioneers Trail* is a road that surrounds the Peak. You will need to get out and climb to the summit to experience the breath-taking views. However, no formal walk trail exists currently.

Avondale Farm has two trails; *Avondale Bush Reserve Walk Trail* and *Avondale Drive Trail*. These trails have limited access from March to October and are closed in summer. Please contact the National Trust of WA on (08) 9321 6088.

If you are interested in heritage and culture, then the award winning *Vincent Street Heritage Walk* is a great place to start. Download the app at the trail head and scan the QR codes on the markers along the trail route. Something for the whole family and

particularly the kids is the new *Beverley Play trail*. Download the app and get exploring! The *Christmas Tree Well Walk* is a fantastic bush walk that is located off the Brookton Highway. For something a little different, how about checking out Geocaching? There are a couple of *GeoTrails* that take you on an adventure through the Wandoo Bushlands. You will need to join as a member which is easy to do on the website [www.geocaching.com/play](http://www.geocaching.com/play).

For more information on the trails go to [www.beverleywa.com](http://www.beverleywa.com).

## Brooking Street Reserve Trail

The sheoak woodland reserve is situated just around the corner from the RV park on Brooking Street. There are two short walk trails that total 493 metres. The quaint but plentiful reserve is known for the large number of orchids found from late Winter to Spring.

## Dale River Reserve Trail

A short drive of around 15 kilometres out of town is a perfect little escape. The reserves natural pool along the Dale River is a breeding ground for local wildlife, particularly birds. There are two walk trails totalling 1.2 kilometres and a picnic table to sit and enjoy the serenity and sound of birds calling. See location on map page 20.

## Vincent Street Heritage Walk

This award-winning trail guides you on a tour of the stunning heritage buildings in Beverley. Download the app by scanning the QR code at the trail head just outside the Beverley Visitor centre.

Along Vincent Street, pedestals will be found outside buildings of significance or follow the map on the Augmented app reality app.



## Beverley Play Trail

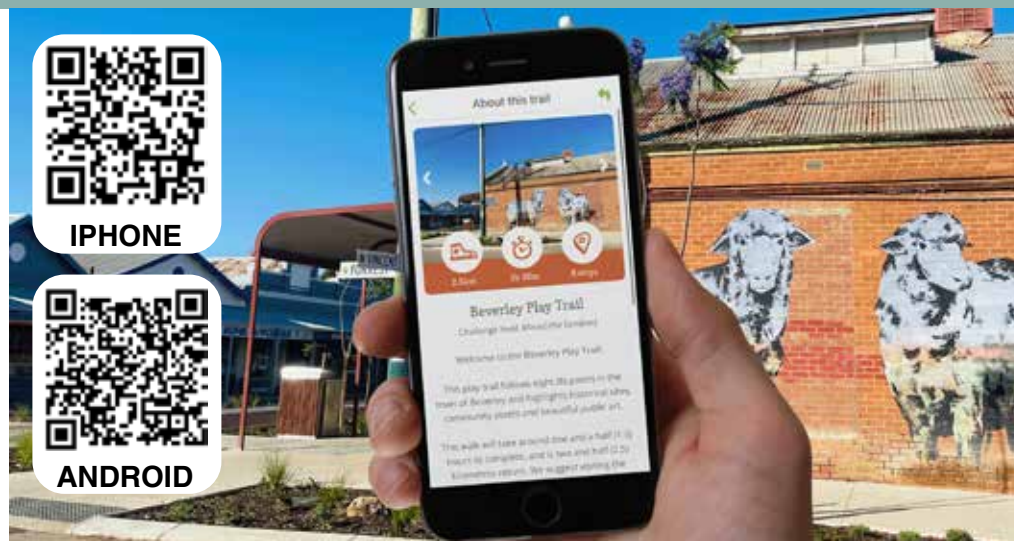
Thanks to Nature Play WA for helping bring the Beverley Play Trail to town. Download the app using one of the QR codes and get out exploring the Beverley sites. Unlock challenges, solve puzzles and questions whilst being outdoors and getting active.



IPHONE



ANDROID





## Avon Valley Region

Your next weekend getaway! A fantastic country escape less than an hours drive east of Perth. Be amazed at the beautiful rolling hills, green in winter or maybe yellow from the flowering Canola crops. Warm country hospitality filled with a rich history of early settlers and culture to boot.

### Beverley Visitor Centre

[www.beverleywa.com.au](http://www.beverleywa.com.au)

### Goomalling Visitor Centre

[www.visitgoomalling.com.au](http://www.visitgoomalling.com.au)

### Northam Visitor Centre

[www.northam.wa.gov.au](http://www.northam.wa.gov.au)

### Toodyay Visitor Centre

[www.toodyay.com](http://www.toodyay.com)

### York Visitor Centre

[www.visit.york.wa.gov.au](http://www.visit.york.wa.gov.au)



**Avon Valley**  
VINTAGE AND VIBRANT

## Pathways to Waverock

Pathways to Wave Rock is a self-drive trail offering a range of unique Wheatbelt experiences. You will travel through the Shires of **Beverley, Bruce Rock, Corrigin, Kondinin, Kulin, Lake Grace, Narembeen and Quairading**. Along the way you can encounter a range of attractions from massive granite outcrops to spectacular views and vibrant wildflowers. Country hospitality is the regions specialty but you will surely see unique and iconic sights, including Wave Rock.

[www.pathwaystowaverock.com.au](http://www.pathwaystowaverock.com.au)





Services

Banking

ANZ ATM	126 Vincent Street	
Australia Post	128 Vincent Street	9646 1300

Community Services

Beverley CRC	141 Vincent Street	9646 1600
Beverley Library	141 Vincent Street	9646 1600
Shire of Beverley	136 Vincent Street	9646 1200

Fuel & Mechanical Services

All Automotives	Railway Parade	9646 1396
Beverley Dome Fuel & Hire	Hunt Road (24hr Fuel only)	0427 341 057
Beverley Tyre Service	48 Dawson Street	9646 1607

Medical Services

Beverley Medical Practice	106 Forrest Street	9646 1241
Beverley Health Service	1 Sewell Street	9646 3200
Beverley Pharmacy	112 Vincent Street	9646 1134
Vines Medical Practice	135 Vincent Street	9646 1125

Picnic Areas

Apex Park	Cnr Lukin & Vincent Streets	9646 1200
Beverley Oval	Forrest Street	9646 1200
Moort Wabiny Park	Vincent Street	9646 1200

Post Office

Beverley Post & News	128 Vincent Street	9646 1300
----------------------	--------------------	-----------

Public Toilets

Apex Park	Cnr Lukin & Vincent Streets	9646 1200
Town Hall	Vincent Street	
Memorial Park	Vincent Street	
Beverley Oval	Forrest Street	

Police

Beverley Police Station	Hunt Road	9646 3333
-------------------------	-----------	-----------

Sporting Facilities

Beverley Bowling Club	Forrest Street	0428 371 714
Beverley Golf Club	Forrest Street	9646 1090
Beverley Lawn Tennis	Forrest Street	0429 418 576
Beverley Swimming Pool	John Street	9646 1026
Beverley Town Oval	Forrest Street	9646 1200

Transport Services

Transwa Terminal located	Council Drive	1300 662 205
--------------------------	---------------	--------------

Accommodation

Avondale Farm Cottages		9321 6088
Beverley Bed & Breakfast	131 Forrest Street	9646 0073
Beverley Caravan Park	Council Road	0457 344 434
Beverley RV Friendly Site	Cnr Lukin & Vincent Street	9646 1200
Freemasons Tavern	104 Vincent Street	0458 111 835
Greenhills Inn	444 Greenhills Rd	9641 4095
Hotel Beverley	137 Vincent Street	9646 1190
Lavendale Farm	5895 Great Southern Hwy	9641 4131
Self contained cabins	Council Road	0457 344 434
White Gum Farm	680 Cameron Rd, York	0408 906 520

Café & Restaurants

Beverley Bakehouse	123 Vincent Street	9646 1839
Freemasons Tavern	104 Vincent Street	9646 1347
Greenhills Inn Bar & Cafe	444 Greenhills Road	9641 4095
Hotel Beverley	137 Vincent Street	9646 1190
The Rabbit Hole	126 Vincent Street	Coming soon
The Red Vault	115 Vincent Street	9646 0008
White Gum Farm	680 Cameron Rd	0408 906 520



Find us on Facebook and Instagram

 [@visitbeverleywa](https://www.facebook.com/visitbeverleywa)

 [@visit.beverley](https://www.instagram.com/visit.beverley)

[www.beverleywa.com](http://www.beverleywa.com)

## Beverley Dome Fuel & Hire

24 HOUR

Beverley Dome Fuel  
~ 24 HOUR FUEL ~  
ULP | PULD 95 | DIESEL

24 Hour Prepaid service taking most credit, debit and motor charge cards. Services the Beverley shire and surrounding areas.



Beverley Hobby Farm Machinery Sales

TRACTORS | LOADERS | MOST ATTACHMENTS

Catering for small lifestyle farmers. Come and inspect at Corner Hunt Rd & Vincent St, Beverley.



PHONE BRIAN 0427341057



